

## BARMOUTH MEWS, BARMOUTH ROAD, SW18 2DT



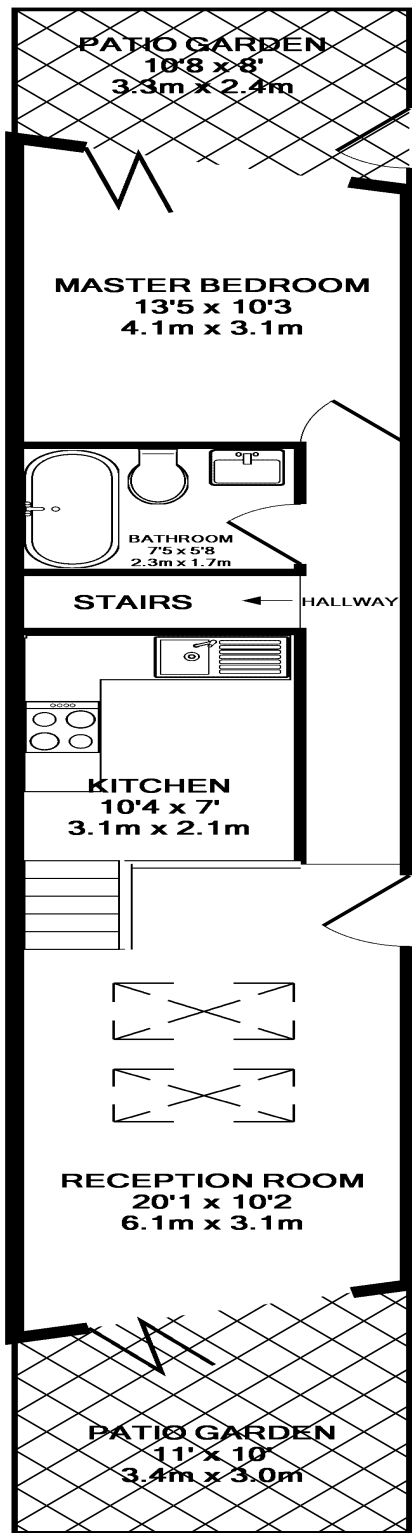
We are pleased to offer an impressive brand new contemporary freehold detached house which is positioned on a sought after residential street in Wandsworth. The accommodation comprises reception room with concertina doors opening to a private terrace, smart lower level kitchen, mezzanine bedroom/ study, double bedroom with concertina doors to another private patio and bathroom. No onward chain. EPC rating B.

- One Double Bedroom
- Mezzanine Study Room
- 21ft Reception Room
- Lower level Kitchen
- Smart Bathroom
- Two Patio Gardens
- Light & Airy
- No Onward Chain

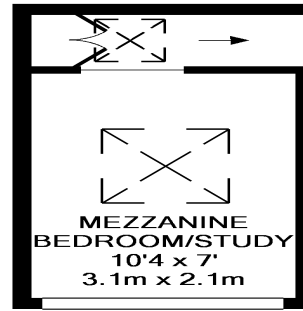
**£595,000**

**Freehold**

Barmouth Mews, Barmouth Road, SW18 2DT



GROUND FLOOR



RAISED LEVEL

BARMOUTH MEWS, BARMOUTH ROAD, SW18 2DT  
 TOTAL APPROX. FLOOR AREA 664 SQ.FT. (61.7 SQ.M.)

Whilst every attempt has been made to ensure the accuracy of the floor plan contained here, measurements of doors, windows, rooms and any other items are approximate and no responsibility is taken for any error, omission, or mis-statement. This plan is for illustrative purposes only and should be used as such by any prospective purchaser. The services, systems and appliances shown have not been tested and no guarantee as to their operability or efficiency can be given  
 Made with Metropix ©2015

For clarification, we wish to inform prospective buyers that we have prepared these particulars as a general guide. We have not verified permissions, nor carried out a survey, tested the services, appliances and specific fittings. Room sizes where stated are approximate and should not be relied upon for carpets and furnishings. We make every reasonable effort to ensure that the information is accurate. However, no guarantees for the accuracy of information are made and we make no warranties of any kind, whether expressed or implied, in respect of the information supplied. You should make independent enquiries regarding the property particularly in respect of furnishings to be included/excluded and parking facilities.