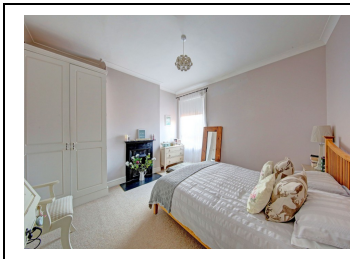
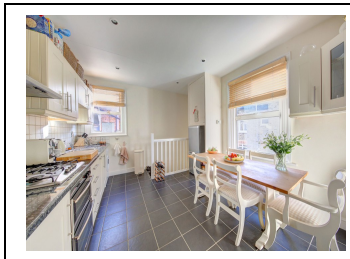


## TRANMERE ROAD, SW18 3QU



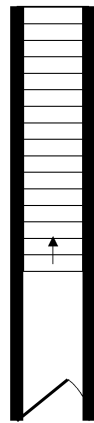
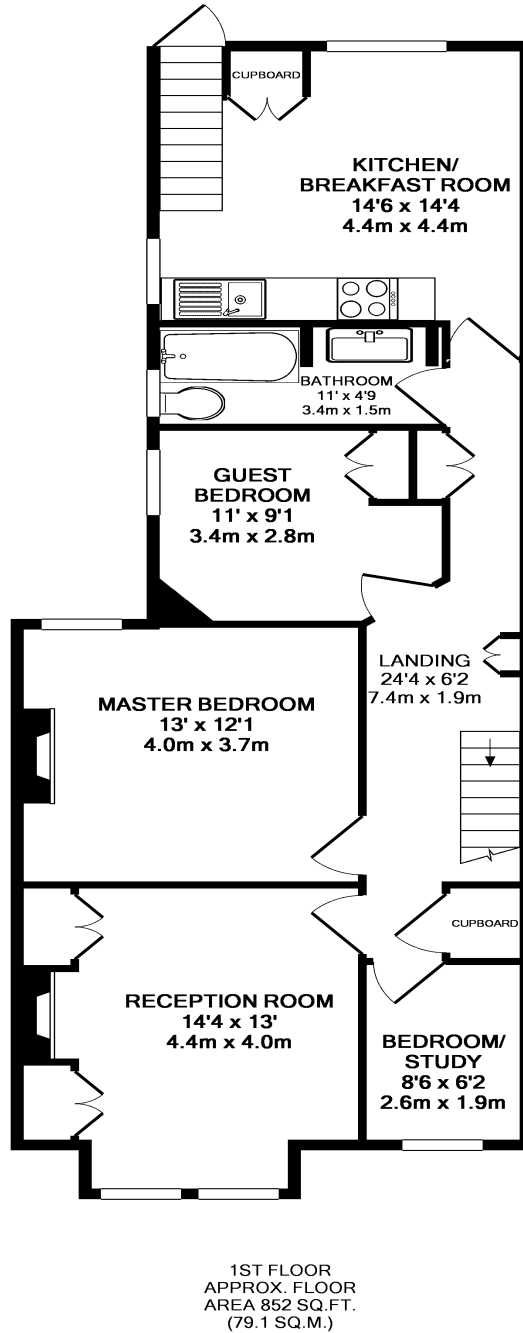
We are delighted to offer a superb example of a first-floor period maisonette situated on one of Earlsfield's most sought after roads. This stunning accommodation comprises, in brief, front reception room with feature fireplace, two double bedrooms, single bedroom/study, smart bathroom, good sized kitchen/breakfast room with plenty of space for a table and chairs and a private 20ft garden. An added benefit is that there is a substantial loft that can be converted subject to usual planning consent. EPC rating C.

- Three Bedrooms
- Reception Room
- Kitchen/Breakfast Room
- Bathroom
- Private Garden
- First Floor Maisonette
- Loft Extension Potential (STP)
- Immaculate Condition
- Close To Mainline Station

**£675,000**

**Share Of Freehold**

Tranmere Road, SW18 3QU



GROUND FLOOR  
APPROX. FLOOR  
AREA 52 SQ.FT.  
(4.9 SQ.M.)

TRANMERE ROAD, SW18 3QU  
TOTAL APPROX. FLOOR AREA 904 SQ.FT. (84.0 SQ.M.)

Whilst every attempt has been made to ensure the accuracy of the floor plan contained here, measurements of doors, windows, rooms and any other items are approximate and no responsibility is taken for any error, omission, or mis-statement. This plan is for illustrative purposes only and should be used as such by any prospective purchaser. The services, systems and appliances shown have not been tested and no guarantee as to their operability or efficiency can be given  
Made with Metropix ©2018

**Disclaimer**

Whilst every attempt has been made to ensure the accuracy of the floor plan contained here. Measurements of doors, windows and rooms are approximate and no responsibility is taken for any error omission or misstatement. These plans are for representation purposes only and should be used as such by any prospective purchaser. The services, systems and appliances listed in this specification have not been tested and no guarantee as to their operating ability or their efficiency can be given.