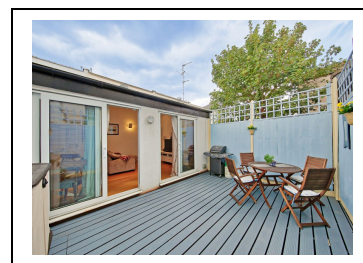
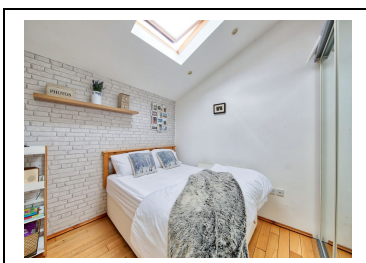
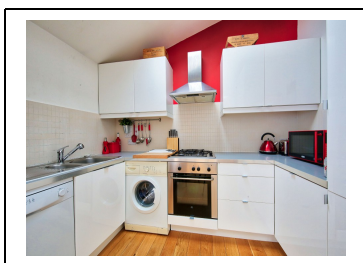


FIRLE PLACE, SW18 3DQ



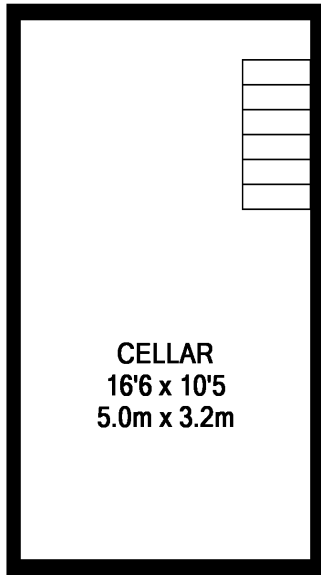
We are pleased to offer a well-presented two double bedroom modern Mews house which is situated just off Inman Road, a very popular road in Earlsfield. The property comprises, in brief, two double bedrooms, large reception room, kitchen, bathroom, private rear garden and a 16ft cellar. The property is within easy reach of all the amenities of Earlsfield including the mainline station. The property is offered with no onward chain. EPC rating D.

- Two Double Bedrooms
- Reception Room
- Kitchen
- Bathroom
- Private Garden
- Cellar
- Close To Mainline Station
- No Onward Chain

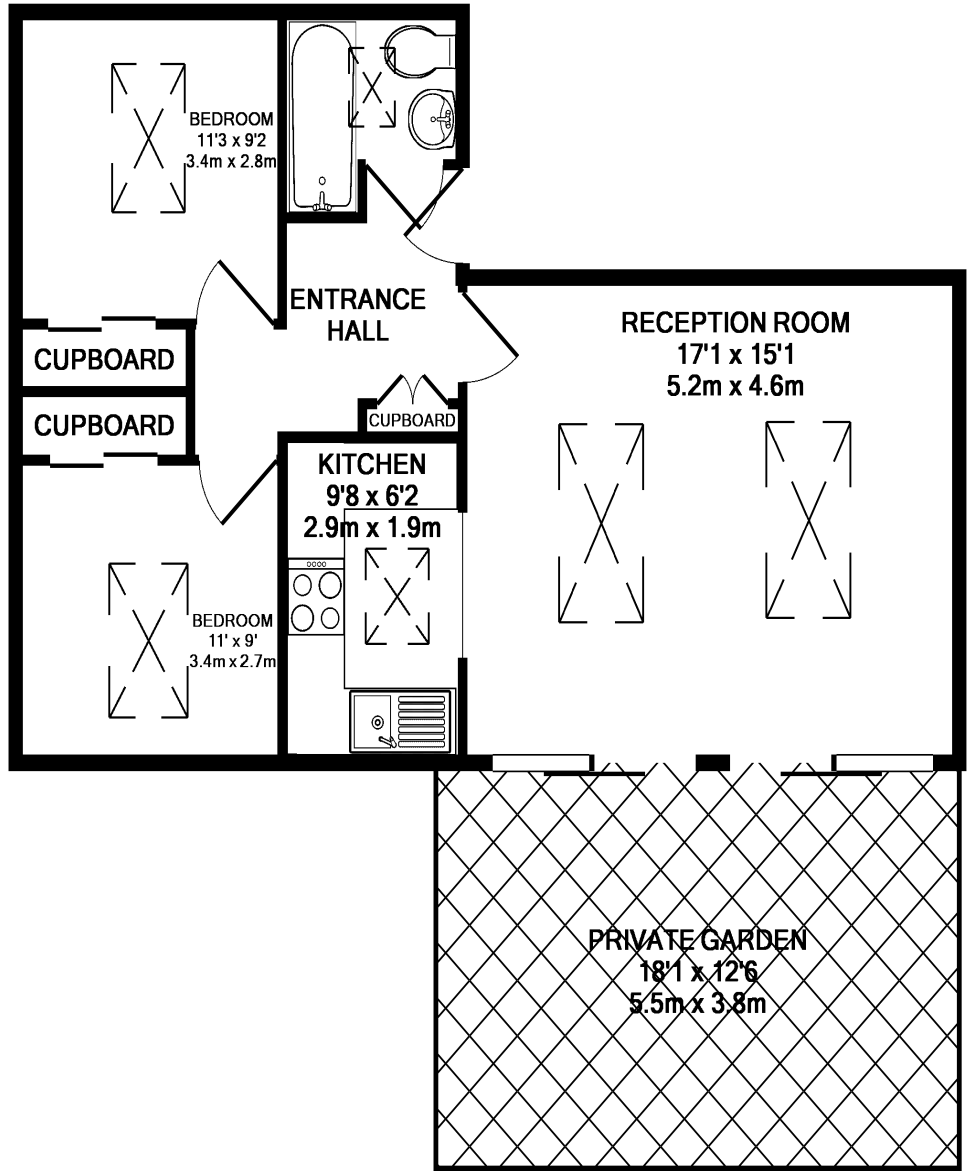
£525,000

Freehold

Firle Place, SW18 3DQ



CELLAR
APPROX. FLOOR
AREA 172 SQ.FT.
(16.0 SQ.M.)



GROUND FLOOR
APPROX. FLOOR
AREA 587 SQ.FT.
(54.5 SQ.M.)

FIRLE PLACE, SW18 3DQ
TOTAL APPROX. FLOOR AREA 759 SQ.FT. (70.5 SQ.M.)

Whilst every attempt has been made to ensure the accuracy of the floor plan contained here, measurements of doors, windows, rooms and any other items are approximate and no responsibility is taken for any error, omission, or mis-statement. This plan is for illustrative purposes only and should be used as such by any prospective purchaser. The services, systems and appliances shown have not been tested and no guarantee as to their operability or efficiency can be given

Made with Metropix ©2018

Disclaimer

Whilst every attempt has been made to ensure the accuracy of the floor plan contained here. Measurements of doors, windows and rooms are approximate and no responsibility is taken for any error omission or misstatement. These plans are for representation purposes only and should be used as such by any prospective purchaser. The services, systems and appliances listed in this specification have not been tested and no guarantee as to their operating ability or their efficiency can be given.