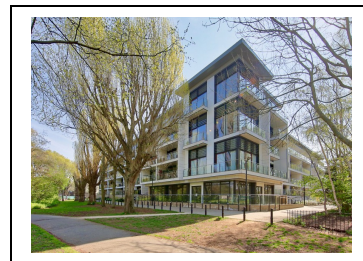
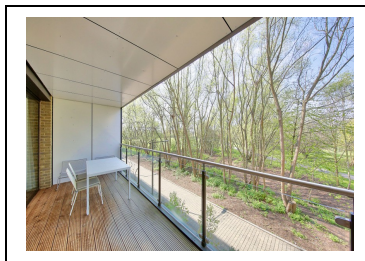
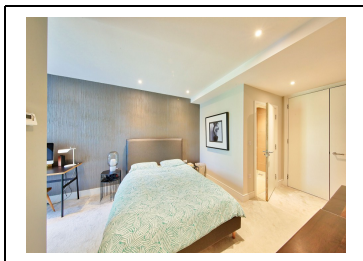


GEORGE VIEW HOUSE, KNARESBOROUGH DRIVE, SW18 4GT



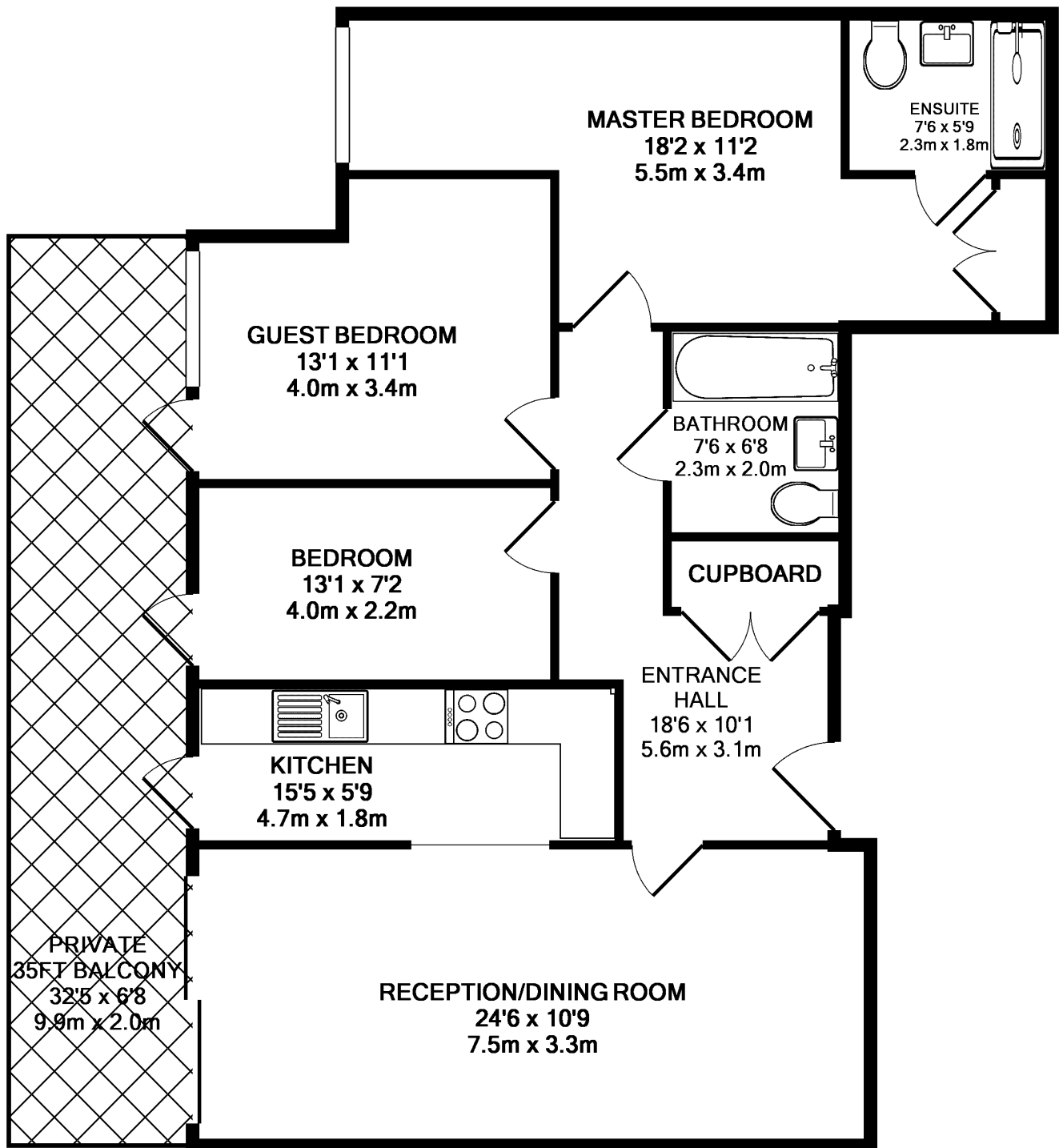
Located in the highly sought after Westfield Waterside development is this lovely three bedroom flat comprising large reception room, kitchen, two double bedrooms, a single bedroom and two bathrooms. In addition there is fitted storage in the hallway, a private balcony which has access from the kitchen, reception room and two of the bedrooms, secure underground parking and communal gardens. George View House runs just off King George's Park and is well placed for Earlsfield Mainline Station and Southfields Tube Station and their fast links to central London. EPC rating B.

- Two Double Bedrooms
- Large Single Bedroom
- Reception/Dining Room
- Kitchen
- Two Bathrooms
- Private Balcony
- Communal Gardens
- Underground Secure Parking
- Over 1000 SQFT

£850,000

Leasehold

George View House, SW18 4GT



GEORGE VIEW HOUSE, SW18 4GT
TOTAL APPROX. FLOOR AREA 1053 SQ.FT. (97.8 SQ.M.)

Whilst every attempt has been made to ensure the accuracy of the floor plan contained here, measurements of doors, windows, rooms and any other items are approximate and no responsibility is taken for any error, omission, or mis-statement. This plan is for illustrative purposes only and should be used as such by any prospective purchaser. The services, systems and appliances shown have not been tested and no guarantee as to their operability or efficiency can be given

Made with Metropix ©2019

Disclaimer

Whilst every attempt has been made to ensure the accuracy of the floor plan contained here. Measurements of doors, windows and rooms are approximate and no responsibility is taken for any error omission or misstatement. These plans are for representation purposes only and should be used as such by any prospective purchaser. The services, systems and appliances listed in this specification have not been tested and no guarantee as to their operating ability or their efficiency can be given.